

Plan Außenbereichssatzung Schlechtenberg

Neufassung


Legende:

 Geltungsbereich der Außenbereichssatzung Schlechtenberg

Flurstücke:

 Flurstücke

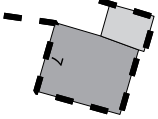
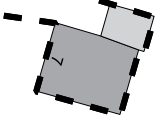
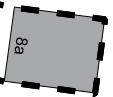
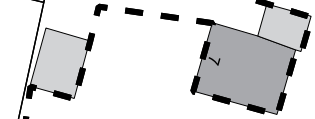
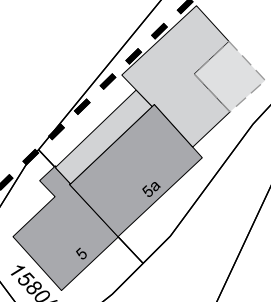
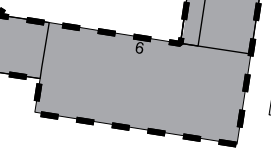
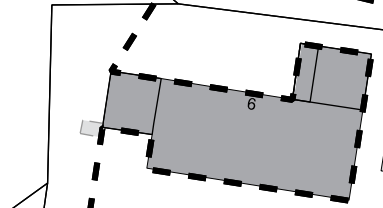
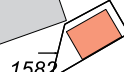
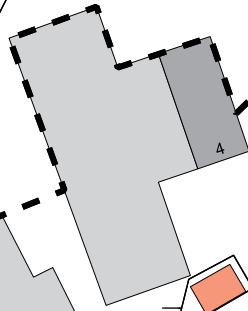
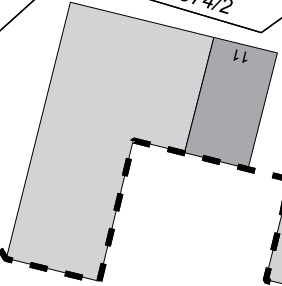
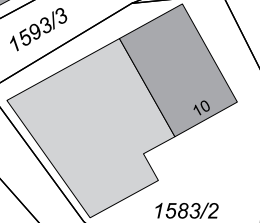
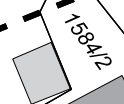
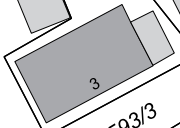
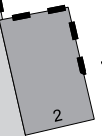
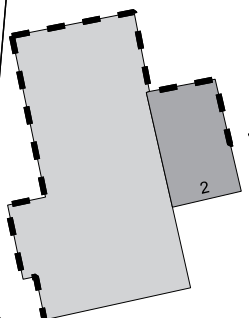
Gebäude:

 Gebäude für Wirtschaft oder Gewerbe oder Nebengebäude

 Wohngebäude

1604

1575



ausgefertigt am

1. Bürgermeister
Gerhard Frey

Erstellt am: 06.07.2020
Maßstab 1:1000

